

How-To Attach Your Spyder2PRO™ Tripod Adapter

Step 1. Attaching the tripod adapter to the Spyder:

The tripod adapter should be placed on the Spyder leg from which the USB cord is fed through, clicking into place.



Step 2. Attaching the tripod adapter to the tripod:

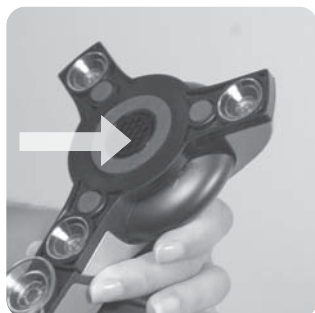
Next you'll use the "shoe" of your tripod to attach the adapter using the threading hole. Then attach both the Spyder and adapter to your tripod.



Steps 3 & 4. Positioning the Spyder for calibration & Pointing the Spyder at the projection screen:

Verify that the "honey-comb" LCD filter is attached to the Spyder base as shown. Place tripod so the Spyder base is parallel to the projection screen, approximately 12" (30cm) away from the screen.

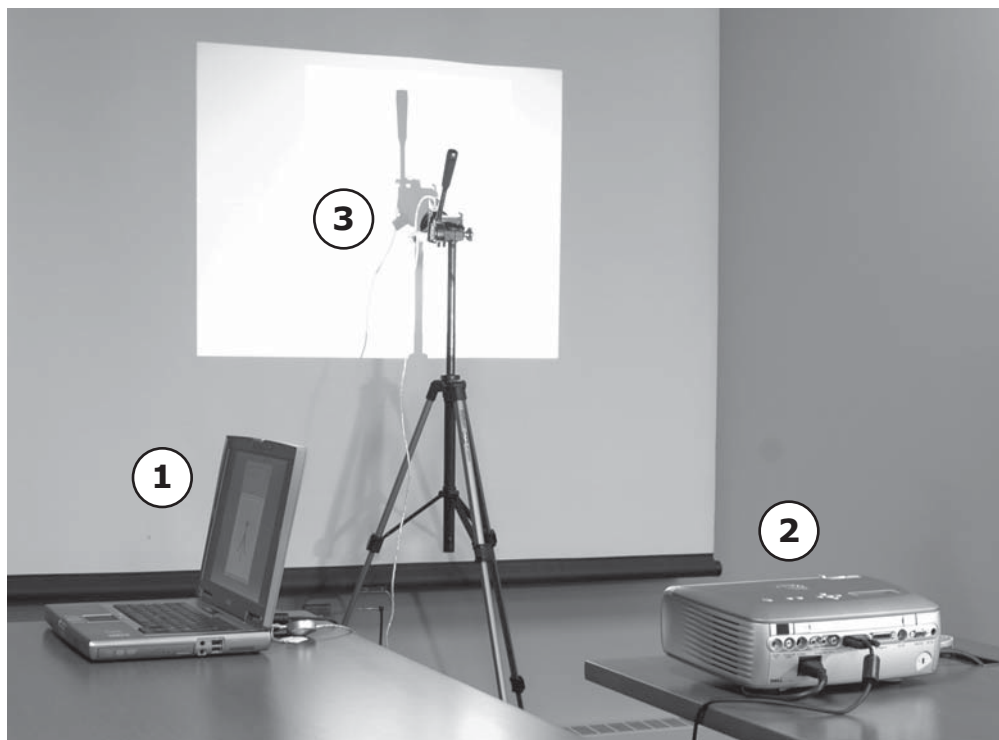
NOTE: DO NOT POINT THE SPYDER DIRECTLY FACING THE PROJECTOR. THE SPYDER MUST BE FACING THE SURFACE THAT IS BEING PROJECTED ONTO.



Final Overview on other side...

How-To Attach Your Spyder2™ Tripod Adapter

Final Overview:



1. Test patterns will cycle through the software on screen.
2. The projector will display the patterns on the wall or screen.
3. The Spyder will analyze the colors displayed and create a ICC profile for this surface and projector; and optional versions of this profile for other ambient light conditions.

This update includes:

- Allowance of computer-driven LCD & DLP multimedia front projector calibration
- Reduced read time for LCD display calibration